





ELEVATION A: RETAIL UNIT ENTRANCES / EXITS & FRONTAGE TO MURDISHAW AVENUE



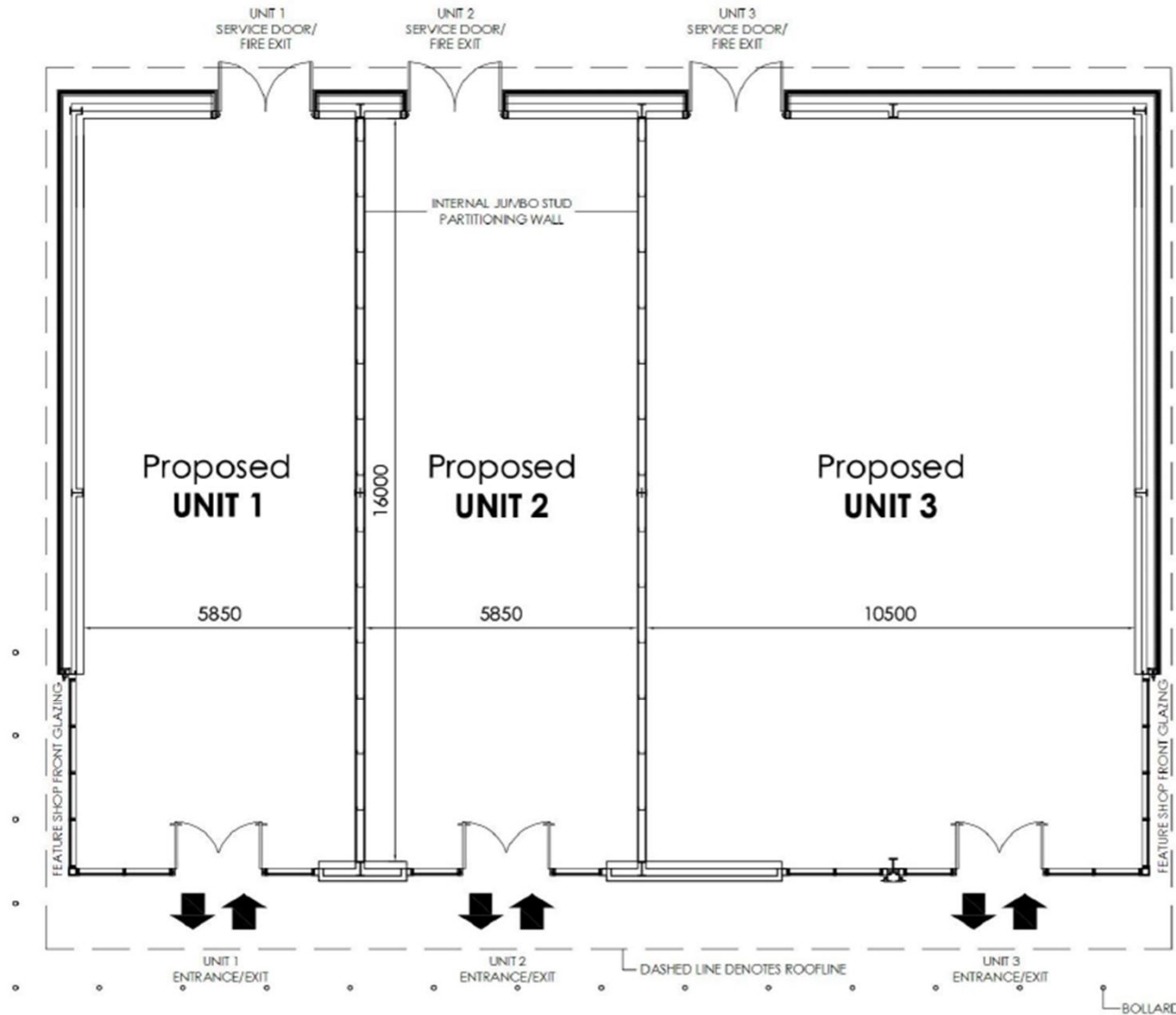
ELEVATION B: SIDE FACADE FACING PROPOSED ALDI FOODSTORE

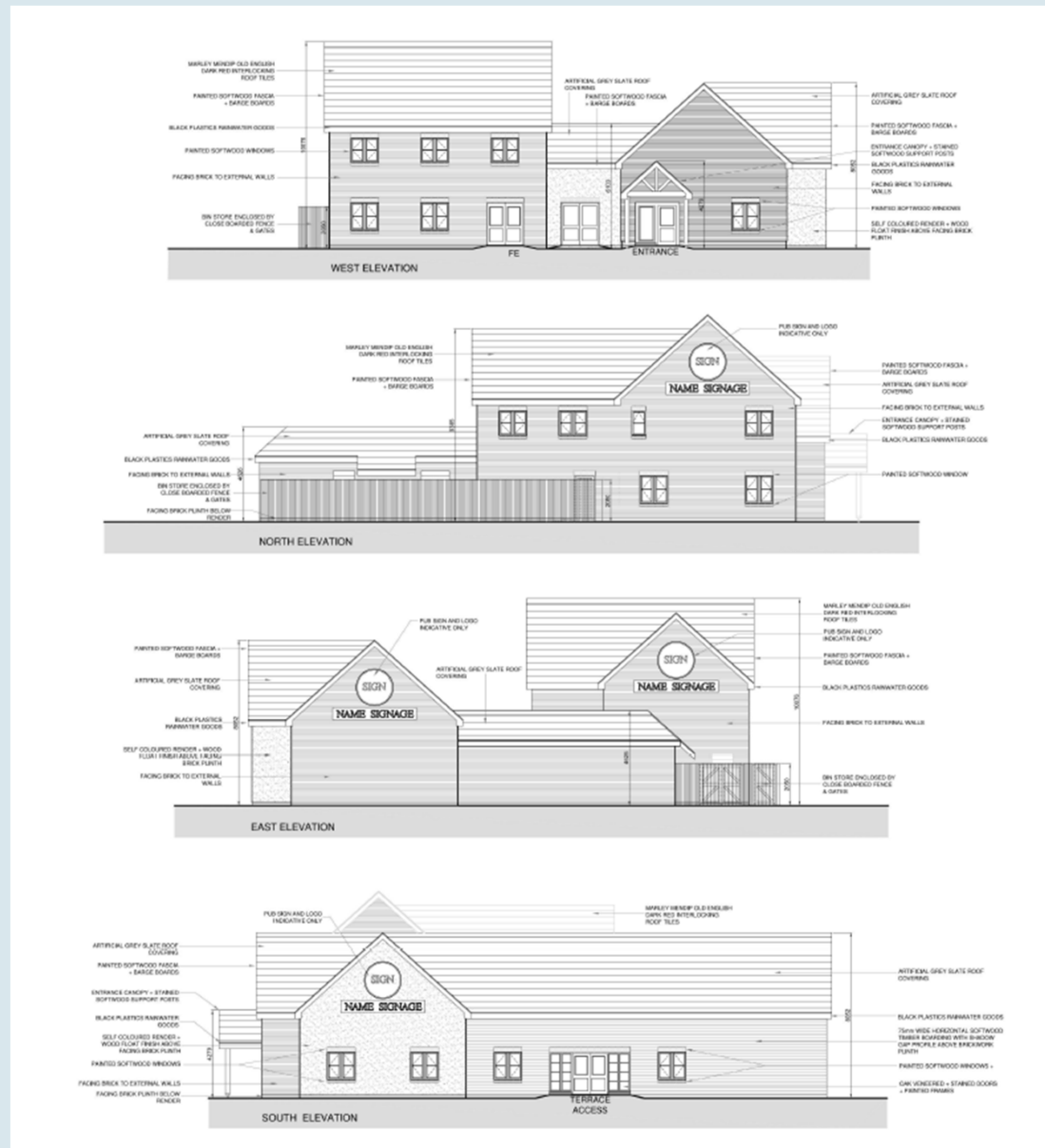


ELEVATION C: REAR FACADE / SERVICE AREA



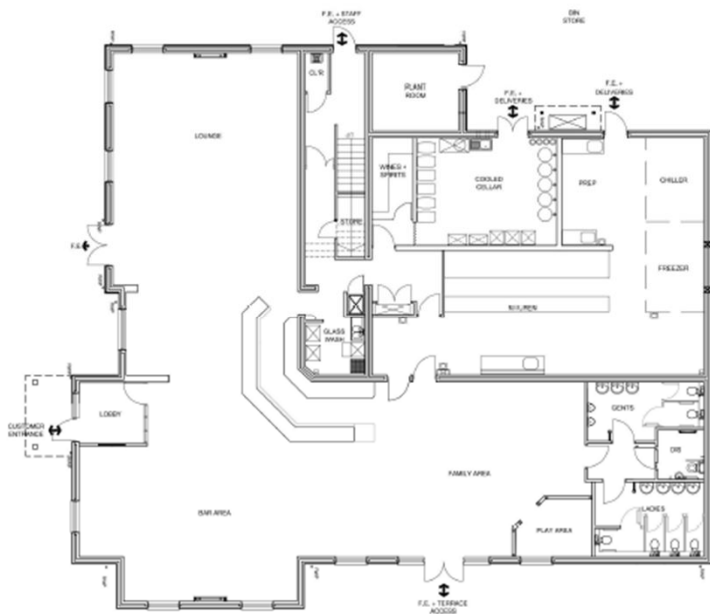
ELEVATION D: SIDE FACADE FACING PROPOSED PUBLIC HOUSE



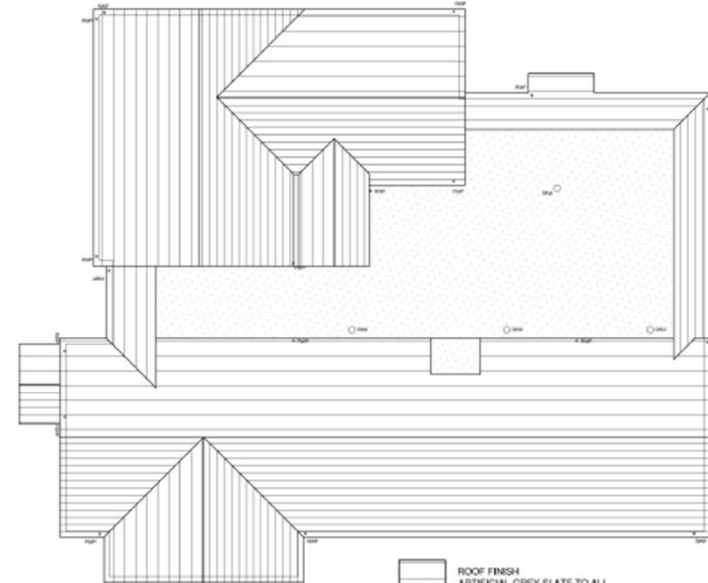




FIRST FLOOR PLAN
 G.E.A. 149.8 SQ M
 G.I.A. 134.4 SQ M
 N.T.A. NIL SQ M

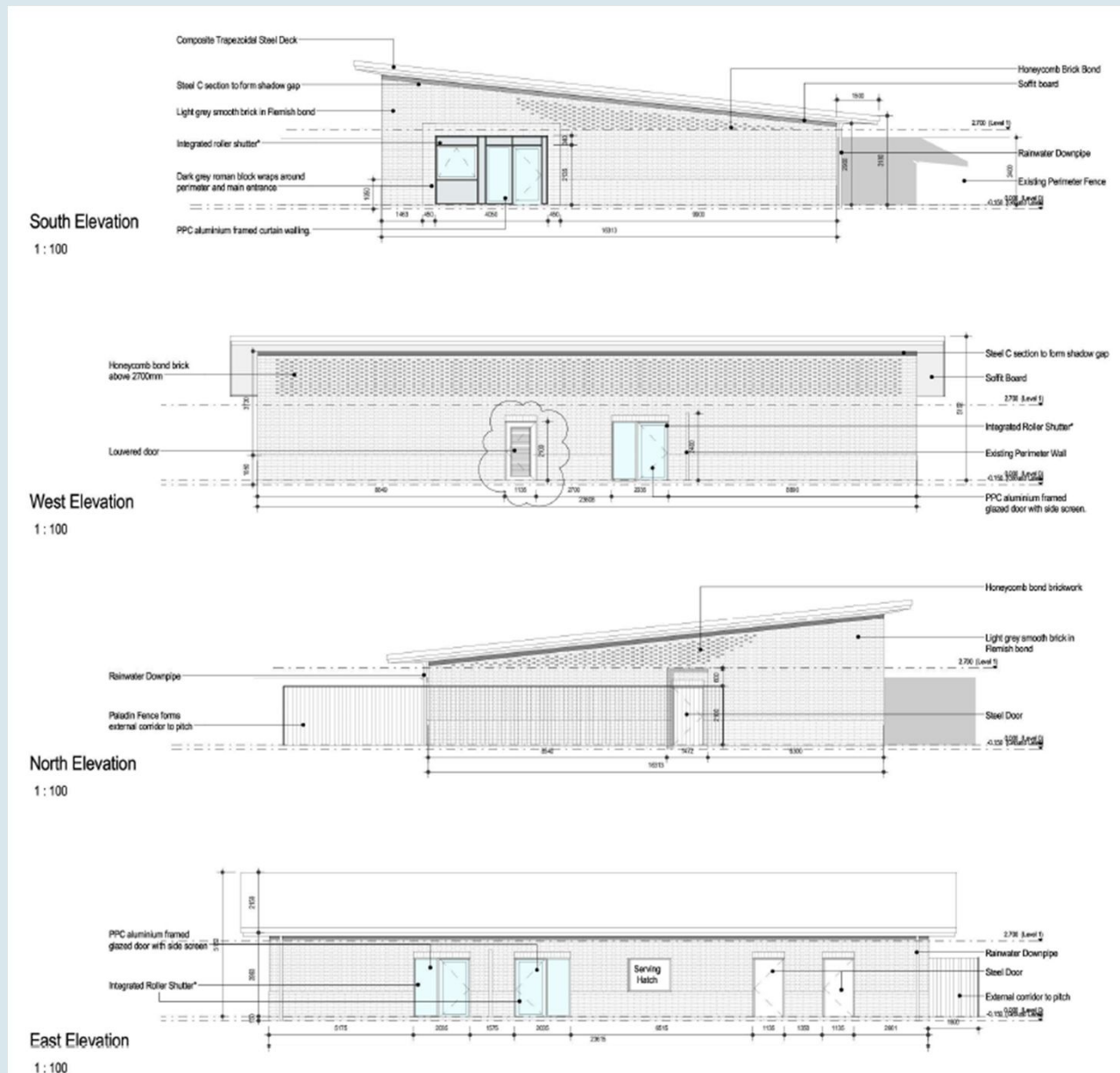


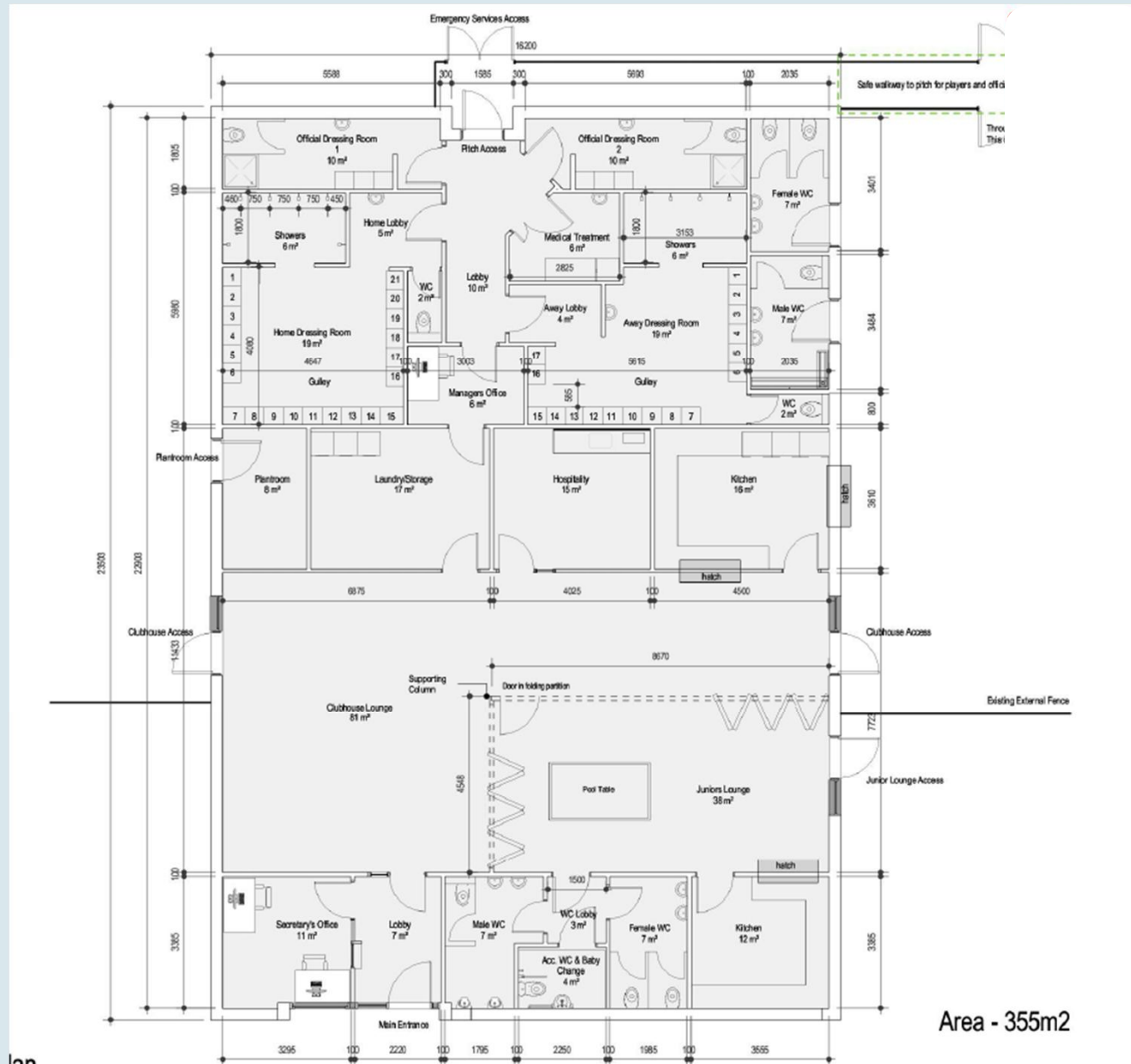
GROUND FLOOR PLAN
 G.E.A. 568.1 SQ M
 G.I.A. 537.0 SQ M
 N.T.A. 262.0 SQ M

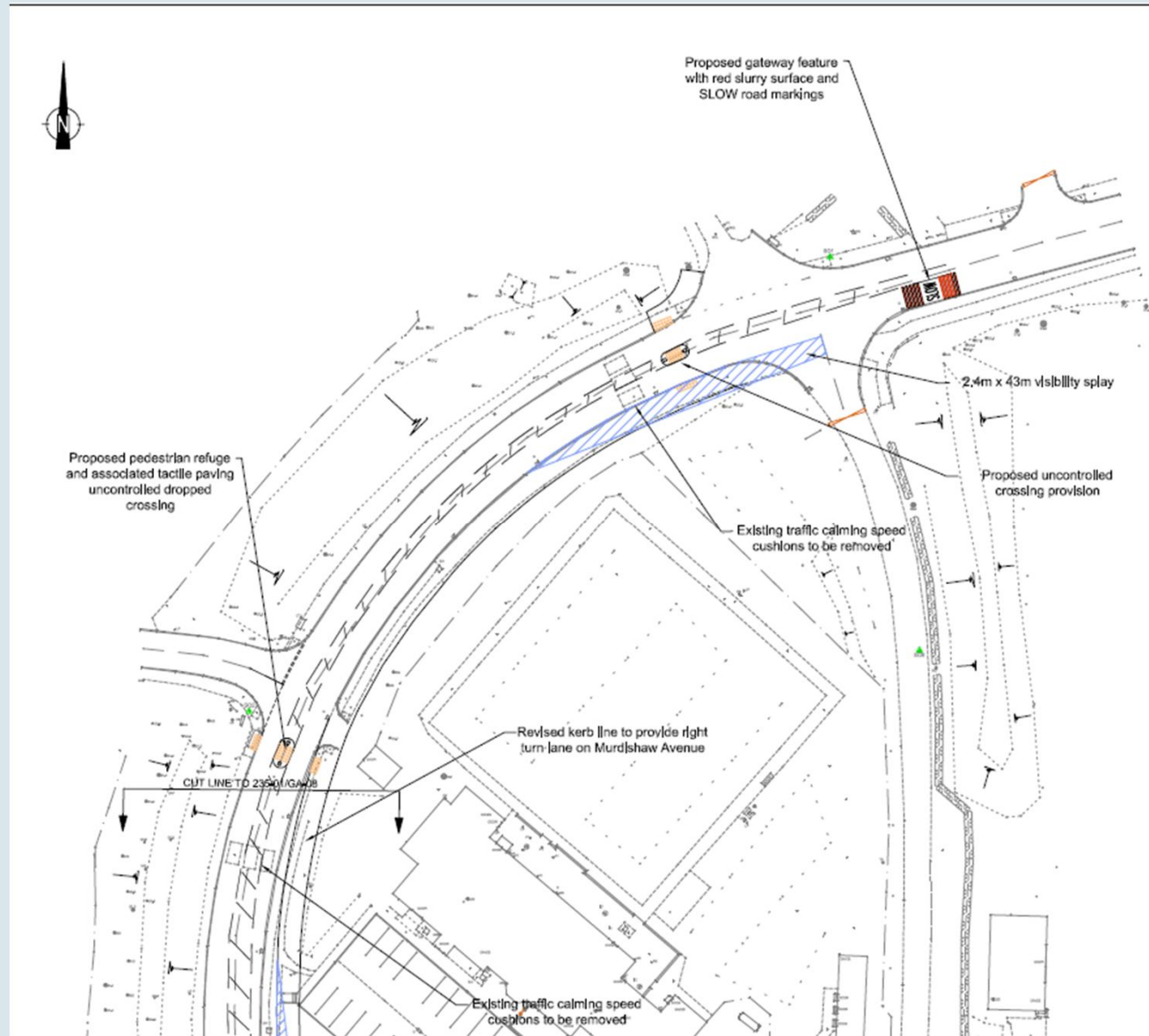


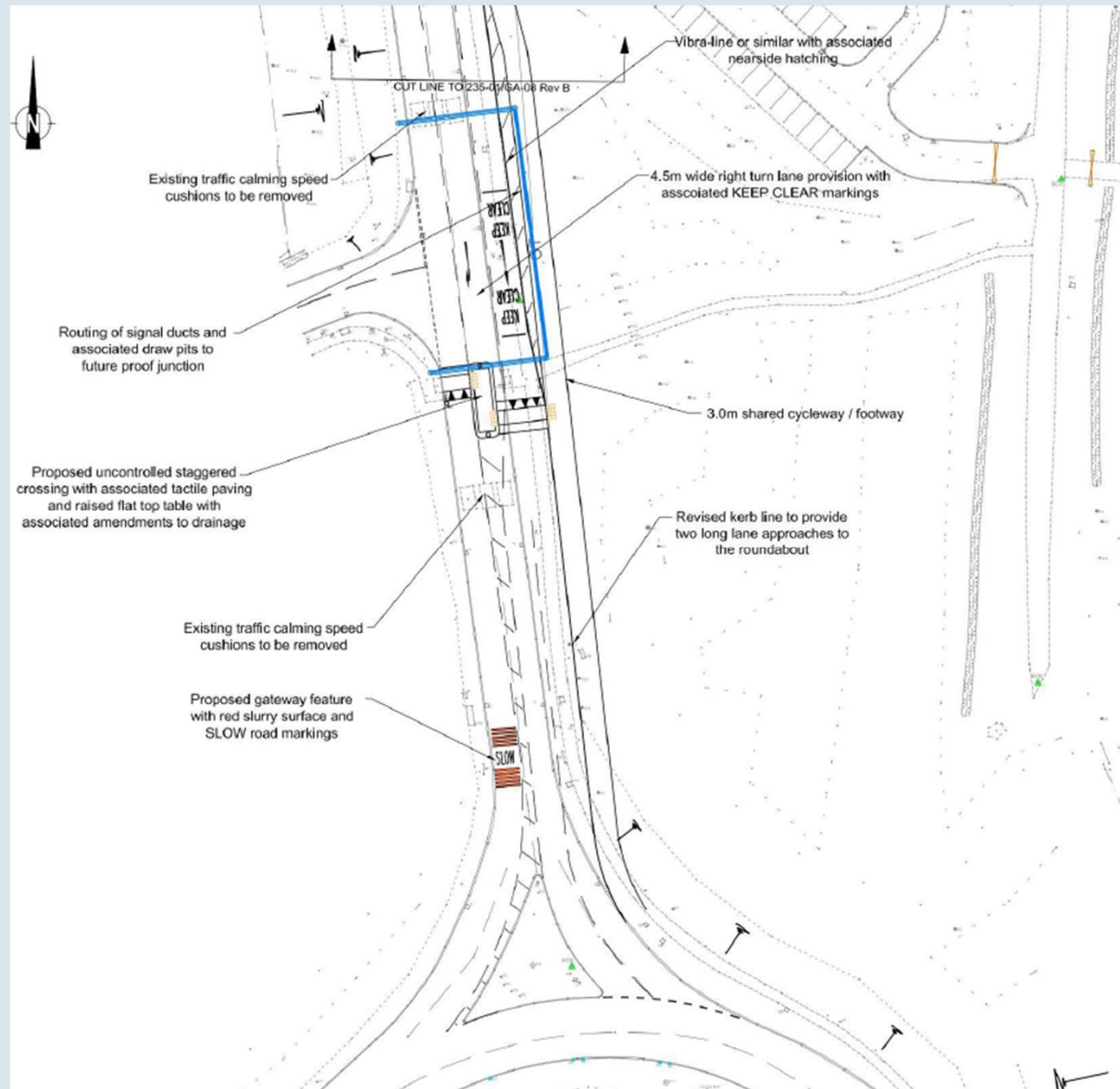
ROOF PLAN

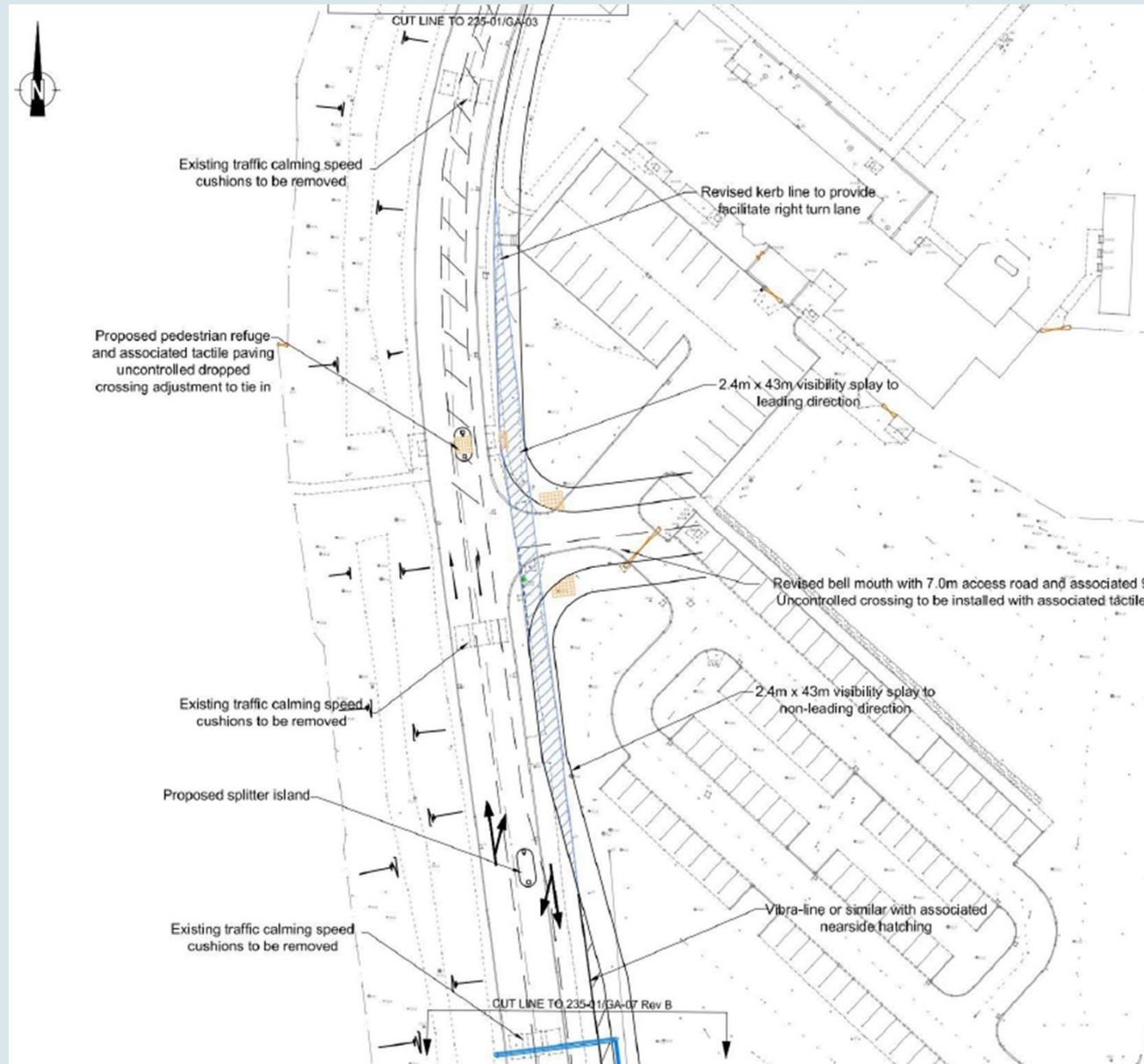
-  ROOF FINISH
ARTIFICIAL GREY SLATE TO ALL
PITCHED ROOFS
-  ROOF FINISH
SINGLE PLY ROOFING MEMBRANE









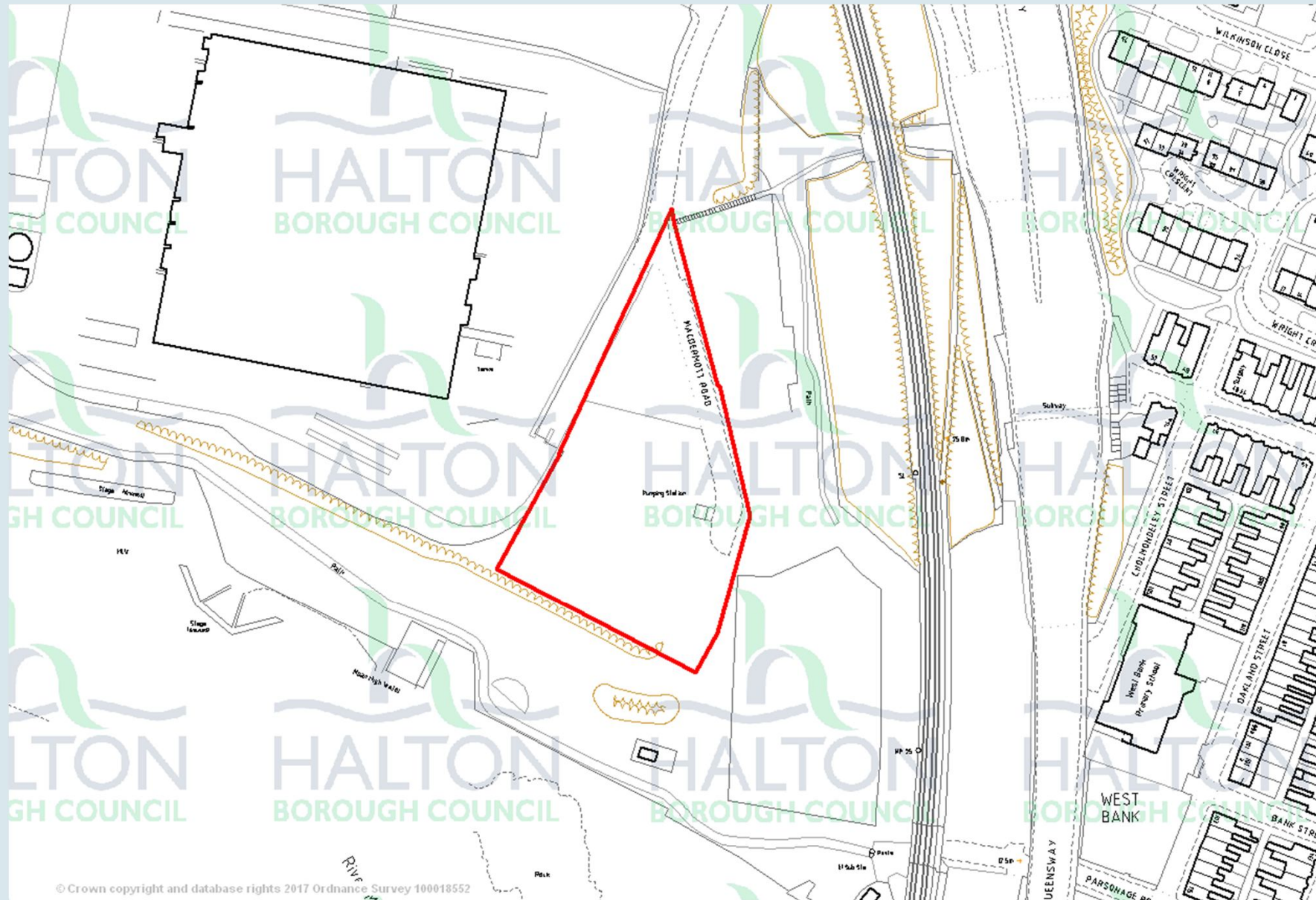






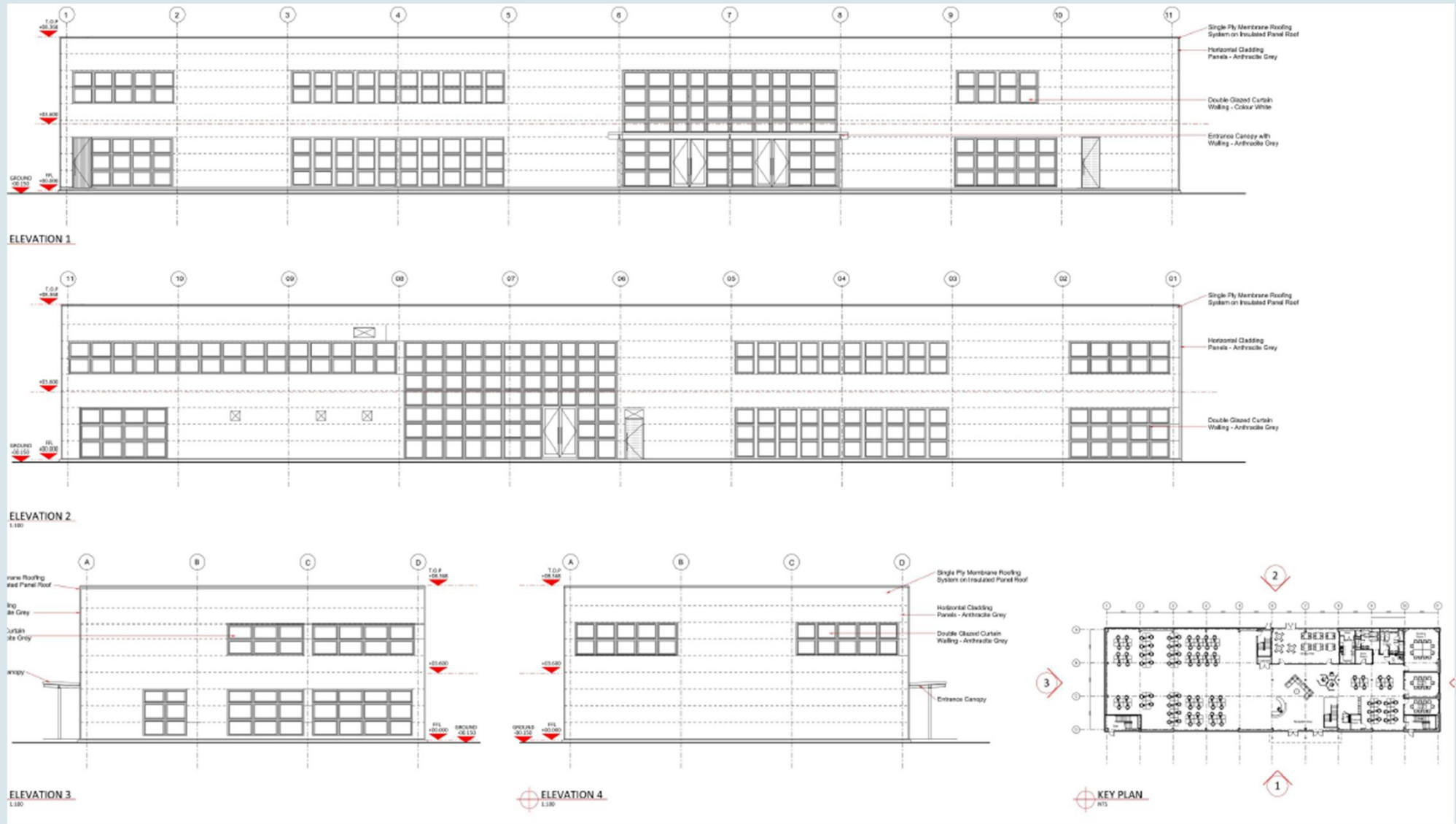


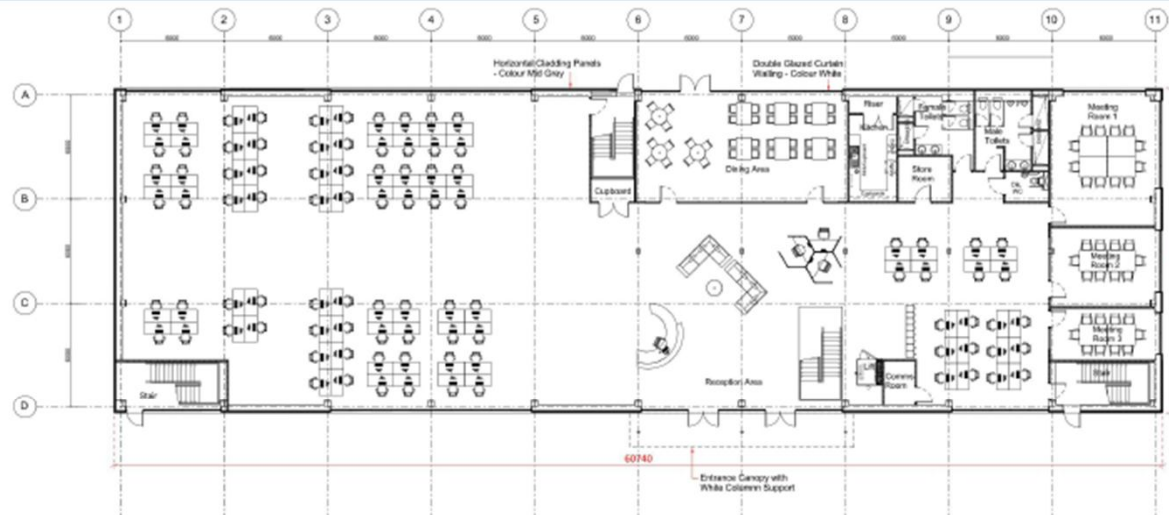




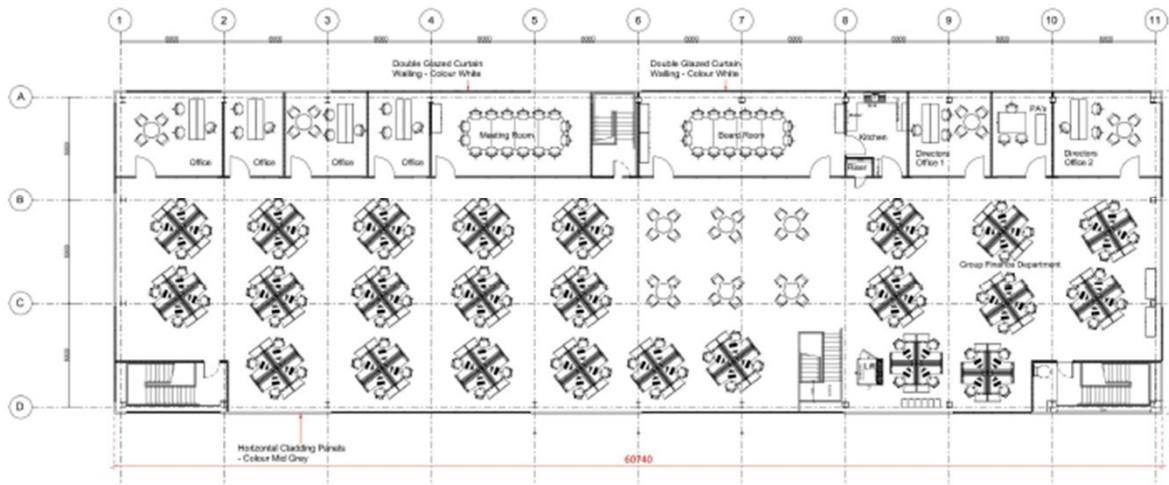


AERIAL VIEW INDICATES ROUTE OF FOOTPATH / CYCLE ROUTE TO THE SITE FROM BUS STOP (NTS)





GROUND FLOOR PLAN



FIRST FLOOR PLAN

